



Saumlaki

The Forgotten Islands

Plt. Direktur Jenderal Perikanan Tangkap
M. Zulficar Mochtar, S.T., M.Sc



Saumlaki in a brief a small city as capital of Maluku Tenggara Barat (MTB) Region



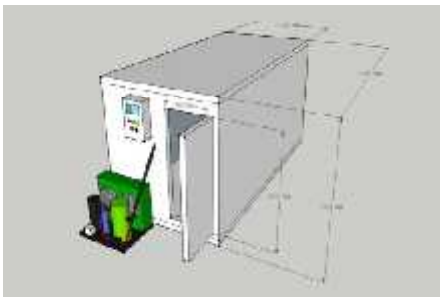
Can be reached by 4,5 hours flight from Jakarta via Ambon and by TOL LAUT from Surabaya



It's Population is 1/5 Compared to City of Manchester (England) or 110.425 citizens

Existing Businesses 2016

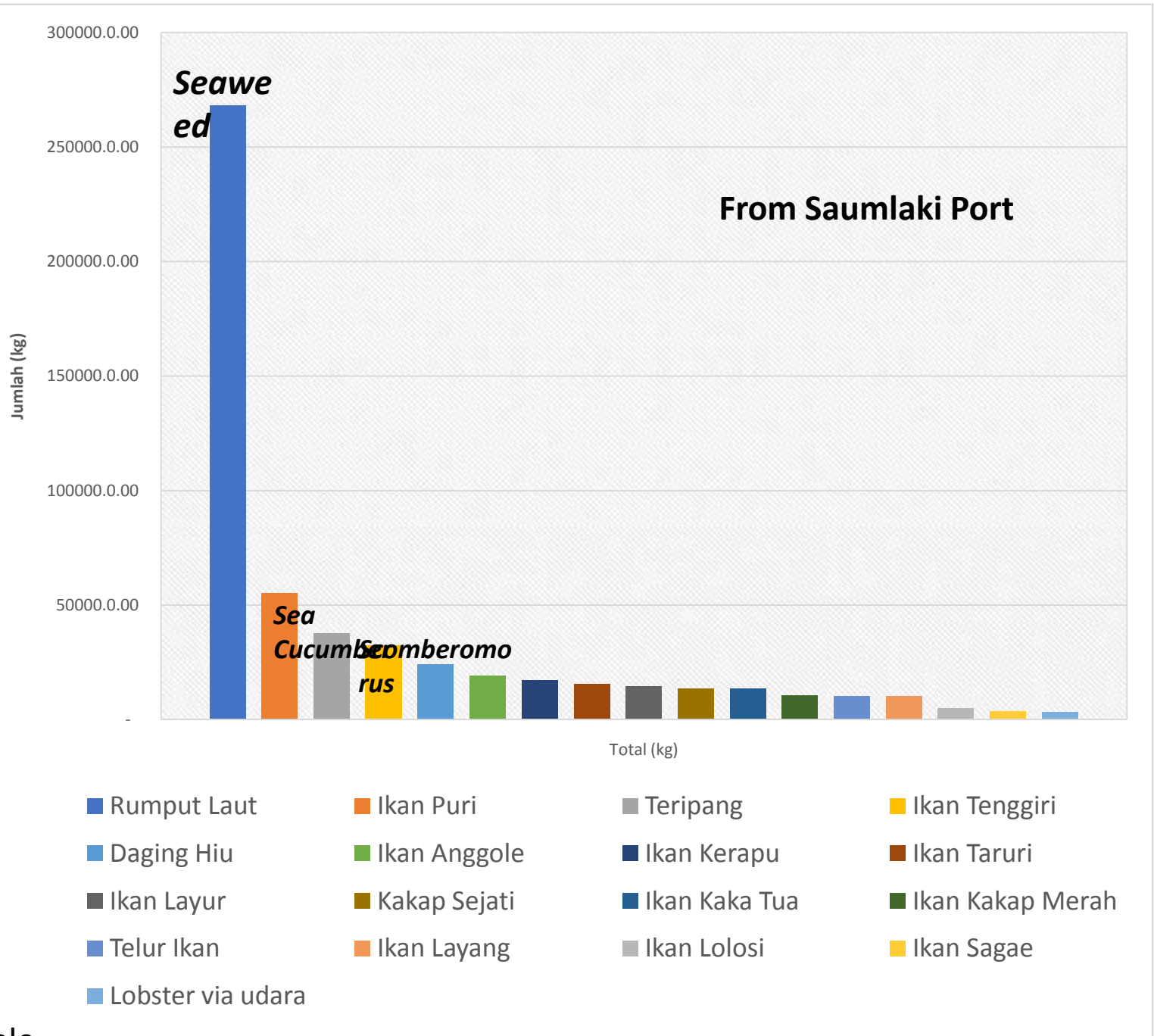
- Seaweed
- Sea cucumber
- Scomberomorus
- Lobster



4 Cold Storages



Most of them is Small Scale



Tourism



Lermatang Beach



Amalmoli Beach

Diving Site

Forgotten Islands, September 4-15 2016 Group Trip - 11hrs
Onboard the Aranui, Maumere-Saumliki



Recorded by: Ondi LaRae



Blue Manta Maumere to Saumlaki

Maumere Maumere Saumlaki Maumere

120 min 120 min

Forgotten Islands 11 Days / 10 Nights

Maumere to Saumlaki

We begin our journey of discovery by visiting the beautiful islands of Maumere, Saumlaki, and the surrounding coral reefs and archipelago. The islands are a paradise for divers, with the chance to see the elusive blue manta rays and other marine life. The islands are also a great place to see the many species of birds and other wildlife. The islands are also a great place to see the many species of birds and other wildlife. The islands are also a great place to see the many species of birds and other wildlife.

Brief Itinerary

Itineraries are subject to change according to weather and sea conditions.

Day 1 (2-4 days) Arrive in Maumere, Maumere and see you to the exciting Blue Manta. Descending on a live line we can do a quick dive. See the beautiful Saumlaki Island.



Sife Beach

Web

<https://www.youtube.com/watch?v=JJJn5Ad>

WHY Saumlaki ?

- Easy accessibility will bring easy access to transport goods, frozen fish, etc
- It will be one hour flight to Darwin, Australia
- Possible Industries are : Seaweed Processing, Sea cucumber Processing, Fresh Kerapu Fish, Shrimp Processing, Pearl Farm
- Quite Close to WPP 718 Arafuru Sea which has abundant resources such as Tuna, Squid, Kakap, Kerapu, Lobster, etc

What To Invest?

- Plant Processing Unit for Fish Product
- Cold Storage
- Hotels for Tourists
- Pearl

COMMODITIES TO EXPORT

TUNA
KERAPU
SEAWEED
SEA
LOBSTER

Nearest GATE to Export:

- Australia : Darwin
- Japan : Kupang – Denpasar – Tokyo
- China : Kupang – Denpasar - China

BAPPEDA JATIM
BADAN PERENCANAAN DAN KEBUDAYAAN DAERAH
PROVINSI JAWA TIMUR

PROFIL | UNIT KERJA | BERITA | PUBLIKASI | POTENSI

Sendang Biru Ekspor Ikan Tuna ke Jepang dan Australia

11 November 2022, 08:58 WIB | [Potensi Kerja](#) | [22 Komentar](#)

Ikan tuna yang dihasilkan dari Sendang Biru umumnya diekspor ke Jepang dan Australia. Ekspor harus melalui Surabaya, Banyuwangi, Jakarta dan Bali, Kelak, Jke jalur lintas selatan yang melewati Kecamatan Sumbermanjing Wetan sendiri dibangun, akan lebih memudahkan arus pengiriman ikan ke luar Sumbermanjing Wetan.

Sampai saat ini, karena keterbatasan jalan yang sempit,

Babel Ekspor 1 Ton Ikan ke Australia

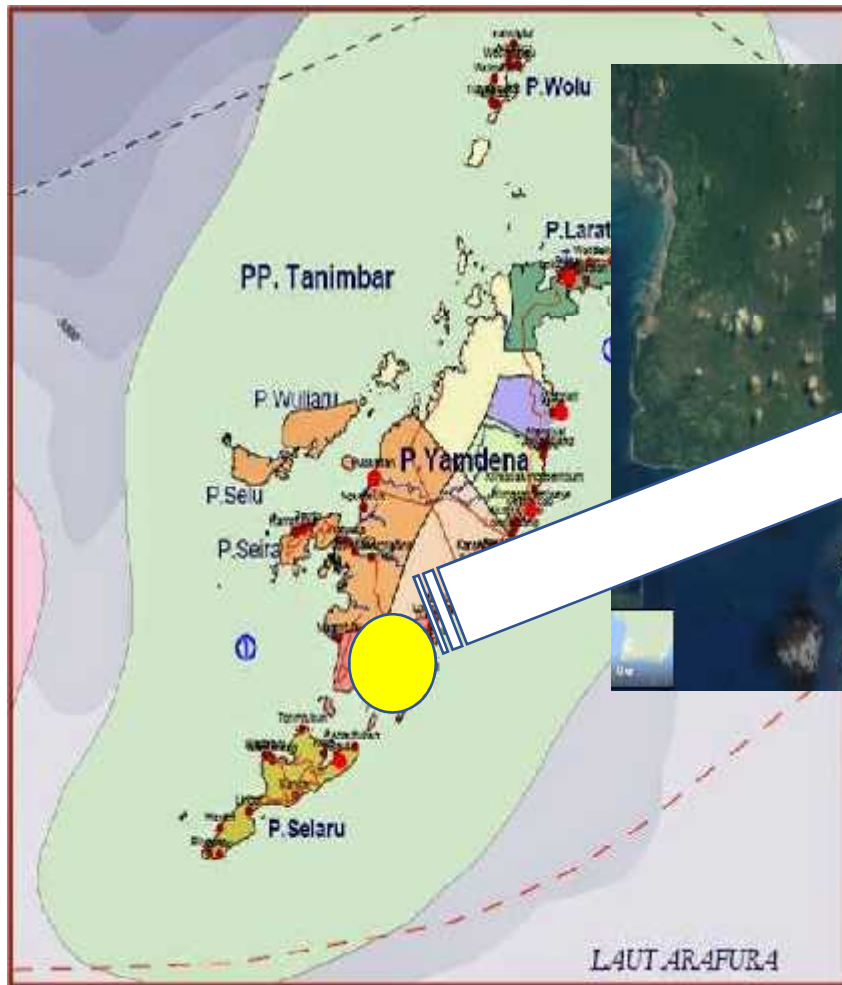


List To Do by KKP in 2017

Our SKPT development focusses on areas below:

- Revitalization of Ukurlaran Fishing Port
- To Assure the Fishing License (SIPI) for some vessels has loading port or port of call at Ukurlaran Fishing Port (saumlaki)
- Build Cold Storage and Ice Flake Machine
- Preparing Seaweed Farm
- Providing Small Fishing Boat for Local Fishermen
- Preparing the Port Authority for Issuing Catch Certificate
- Preparing Fish Quarantine Office

Construction in 2017



2017 Plan :

- Build Small Jetty for small fishing boat
- Rebuild the offices
- Ice Cold Storage
- Gas station

Thank You